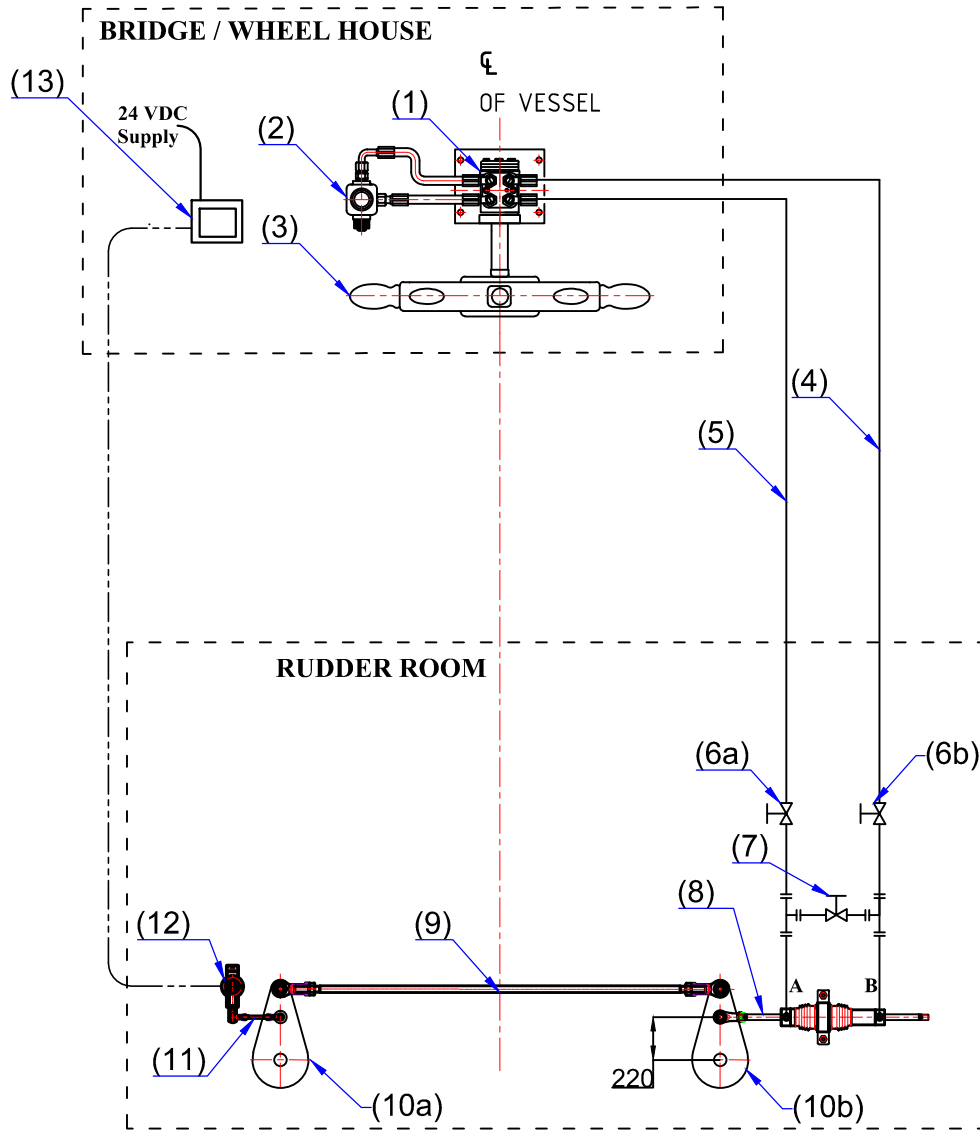


Schematic Diagram - HERCULES - IRS



SPECIFICATIONS

1. Tiller Radius - 220mm.
2. Helm Pump Capacity - 80cc/Rev.
3. Hyd. Actuator :
 Ram - 40mm.
 Stroke - 260mm.
4. Seamless Steel Tube :
 Outer Dia - 16mm.
 Wall Thk. - 2mm.
 Spec. EN 10305-4, E235+N
5. Steering Wheel Dia - Carved Wooden 27"(690mm.) OR
 Stainless steel-24"(610mm.)
6. Hyd. Hose - R1-1/2"
 - W.P.160bar, BP 640bar

REV. B : CETO changed to Hercules actuator

13	Rudder Angle Indicator
12	Rudder Angle Sensor
11	Link Rod for RAI
10	Tiller Arm (Yard Supply)
9	Connection Rod (Yard Supply)
8	Hyd. Actuator - Hercules IRS
7	By-Pass Valve
6a,6b	Isolation Valve
5	Hyd. Line - A
4	Hyd. Line - B
3	Steering Wheel
2	Reservoir
1	Helm Pump
SL.No.	DESCRIPTION



**MAC ♦ N ♦ HOM SYSTEMS
KOCHI - 20**

DESIGNATION

Schematic Diagram
Hercules - IRS

DWG. No.

MHS-4155B

DATE

23.09.2024

A

B

C

D

E

F

G

H